

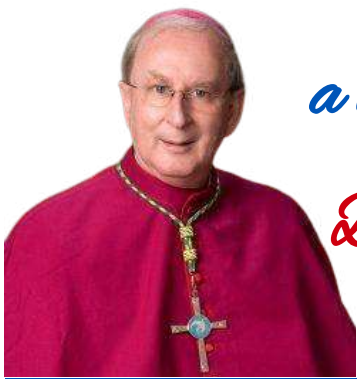
*Caring for those
Who Cared for Us*



On the grounds of San Pedro
Spiritual Development Center

Scan
to
Give





a letter from

Bishop Noonan

Dear Friends in Christ,

Care of our priests as they age with grace is important to me. Since I have been called to serve as shepherd of the Diocese of Orlando, I continue to seek profound ways in which our retired priests can connect to the community of their brother priests, as well as participate in the life of the Church as much as possible. Our community of faith shares in the blessings and challenges of an aging priesthood as we seek to glorify God.

In the Diocese of Orlando, housing options for our priests as they retire are rather limited. A committee of priests and laity have been discussing and planning for the possibility of an independent living community on the grounds of San Pedro Spiritual Development Center. They have spoken to me and my consultants about Emmaus, affordable homes nestled within the beauty of God's celestial liturgy; with the amenities of health care management and brotherly fellowship. In addition, the retired priests who live in Emmaus will be able to offer Sacramental presence to those retreatants and visitors of these sacred grounds. I am grateful for the committee's expertise and the concept and design has been approved.

Emmaus will have 15 residences and one community center in attached home duplexes. Each home will be 1,015 square feet with a carport and an entry porch. The first phase will contain 5 residences and the community center which will provide for fellowship.

The initial stages of this ministry of blessing will cost \$2.5 million. I appeal to your love for our priests who have served the Lord so well by serving God's people these many years and ask you for your blessing of this priests' residence development, Emmaus. If you would, please prayerfully consider making a charitable gift to support this important project. If financial support is not possible, your prayers for our retired priests are always needed.

Sincerely Yours in Christ,

Bishop John Noonan



Our Need

A committee was formed on September 4, 2018 as a result of a survey "Issues Affecting Priests in the Second Half of Life." This committee of clergy and laity met over the next two years to discuss the best solution to Bishop Noonan's desire to provide retired priests with an option for independent living in affordable housing and establishment of holistic care resources.

Our Call

TOTAL PROJECT (\$6M)

- 16 units with 15 residences for our retired priests
- 1 Priest's Community Center (for fellowship with each other, friends and family)
- Endowment for the ongoing maintenance and care of the facilities and residence care

FIRST PHASE (\$2.5M)

- Community Center
- 5 initial residential units as duplexes with 1,015 square feet of comfortable living space including:

| | |
|-----------------|--------------|
| Covered porch | Full kitchen |
| Prayer room/den | Back patio |
| Fully furnished | Carport |
| Laundry room | |
- Emmaus will offer more than living space for our retired priests but also access to needed healthcare and engagement in the San Pedro Center and Queen of Angels communities of faithful

The cost to build this ministry of blessing is \$5 million and to properly care for this special place we wish to create a **\$1 million endowment** (*Emmaus Endowment Fund*) to provide for ongoing maintenance, a source to support priests who are unable to afford the full monthly rental costs and a comprehensive care management program for retired priests residing at Emmaus.

All dollars above \$2.5M raised during **Phase I** will be invested in the *Emmaus Reserve Fund* to build interest until **Phase II** is ready to begin, completing the remaining 10 residences.

Independent Community Living

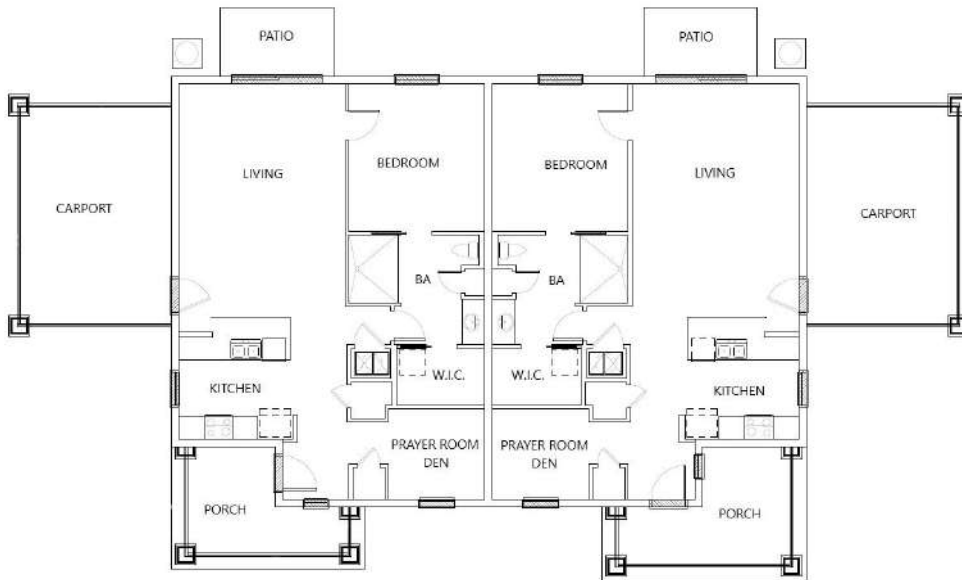
Selection of Residents

The Retired Priests Admissions Committee will determine eligibility for residents and make recommendations to the Bishop.

Those interested will be evaluated through the diocesan RN Care Management Program and must be able to live independently.

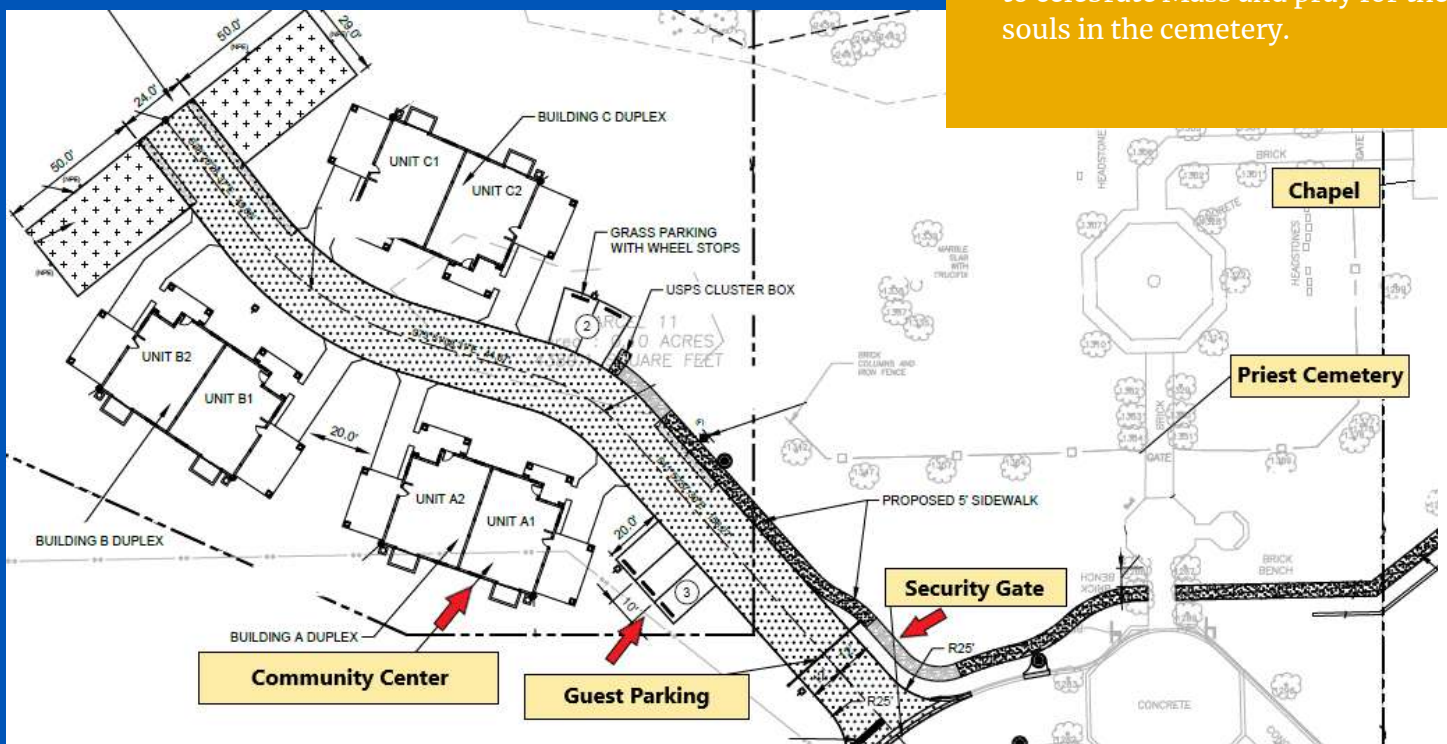
Once selected they will sign a lease and agree to the affordable rent, which is currently estimated to be \$910 per month (the Emmaus Endowment Fund distributions will provide support for priests who are unable to cover the full cost but meet other criteria.)

Residents will be invited to participate in community activities – this will include the priest community as well as the broader community through opportunities to celebrate Mass and pray for the souls in the cemetery.



Emmaus Site Plan

Emmaus features 16 duplex-style units nestled within the 200+ acres of protected Florida wetlands on the grounds of San Pedro Spiritual Center. In addition to a community center, features include a security gate, walking path to the Mary, Mother of God Chapel and a guest parking area.



Life of Service

118

of incardinated Priests in the Diocese of Orlando (as of 2021)

47

of Years a Priest devotes to the Church before retirement (on average)

100%

Parishes & Ministries who rely on Retired Priests to provide Sacraments

27

of Retired Priests who actively assist in Parishes & Ministries*

**All retired priests continue to serve based on their physical and mental capabilities. Two of our retired priests living in long-term care facilities are providing Mass for the residents on a regular basis. We do have seven retired priests who are unable to serve due to extreme health issues.*

“Just so, the Son of Man did not come to be served but to serve and to give his life as a ransom for many.”
(Mt 20:28; Mk 10:45)



Caring for those who Cared for Us

A retired priest in the Diocese of Orlando often continues building up of the Body of Christ, as their physical and mental capabilities allow. In leading their lives, priests are bound in a special way to pursue holiness since, having been consecrated to God by a new title in the reception of orders, they are dispensers of the mysteries of God in the service of His people. Often the only thing the priest gives up is the administrative responsibilities of running a parish. Every priest, in the model of Jesus Christ gives completely of priest himself for the good of the people of God.

Emmaus is one way, that we the people, can serve the faithful priests who have served us.



Emmaus Parish Founding Sponsors

Bishop Noonan met with the pastors of several parishes throughout the Diocese to present the continued need for affordable residences for our retired priests and the progress of the Emmaus project. He also asked for these parishes to prayerfully consider a gift of financial support to allow the building to commence. Their generous response was a blessing and infrastructure work began on February 3, 2021.

Annunciation, Altamonte Springs
Blessed Trinity, Ocala
Nativity, Longwood
Queen of Peace, Ocala
St. Margaret Mary, Winter Park
St. Mark the Evangelist, Summerfield
St. Timothy, Lady Lake
St. Stephen, Winter Springs
St. Vincent de Paul, Wildwood

Impact Testimonials



"I'm so grateful to Bishop Noonan and the people of God for addressing this important need. It is right to honor the great sacrifice of our retired priests."

Monsignor Richard Walsh
Vicar General



"Living in community is so important for priests to maintain a healthy prayer life. Emmaus will allow our retired priests to stay connected with God, one another, and the faithful of our Diocese."

Very Reverend Miguel González
Vicar for Priests



"Reconnect with what really matters – is the slogan of San Pedro. It is an invitation to connect with God, creation and with one's inner being. A priest in retirement at San Pedro would be living continuously in this state."

Reverend Anthony Aarons
Missionary of Mercy



Emmaus Sponsorship Levels

| | |
|------------------|--|
| \$250,000 | St. John Vianney Residence Sponsor Patron Saint of Priests |
| \$125,000 | St. Joseph Residence Sponsor Patron Saint of Homes |
| \$100,000 | St. Michael Security Sponsor Patron Saint of Security |
| \$ 50,000 | St. George Interior/Exterior Sponsor Patron Saint of Shepherds |
| \$ 25,000 | St. Francis Landscaping Sponsor Patron Saint of the Environment |
| \$ 10,000 | St. John the Apostle Community Center Sponsor Patron Saint of Friendship |
| Other | Friends of Retired Priests |

We Need Your Special Generosity

Not everyone can make the same size gift, but everyone can make the same size sacrifice. We ask you to prayerfully consider a gift honoring the priests past, present and future who have dedicated their lives to the spiritual well-being of you and your family.

All contributions from the smallest to the largest will be gratefully appreciated. Your decision is a personal one. It should be made in good conscience and in true Christian spirit.

To partner with Bishop Noonan in care of our retired priests, please fill out and return the Pledge Agreement or create your pledge online at www.cfof.org/emmaus.

As you prayerfully consider your pledge...

- Payments may be made over a period of three (3) to five (5) years.
- Payments are tax-deductible.
- Payment reminders will be mailed to you in accordance with the payment plan of your choosing.
- Additional tax benefits can be enjoyed with gifts of appreciated stock or property.

If you have any questions about the campaign or making your gift, please contact Madelyn Weed at (407) 246-7188 or mweed@cfof.org.



Not everyone can make the same size gift; but everyone can make the same size sacrifice.

How You Can Get Involved...



PRAY

Pray for the success of the Campaign.



PARTICIPATE

Be an ambassador for Emmaus by understanding the impact of this project and dedicating your time and talent.



PROCLAIM

Share this information with as many people as you can with enthusiasm and encourage them to get involved.



PLEDGE

Make your sacrificial gift to the campaign which can spread out over 3-5 years.

Methods of Pledging

Pledges Via Cash, Check or Credit/Debit Card

Simply complete the enclosed pledge agreement by selecting the amount of your pledge and down payment (optional but encouraged). Make sure to select your method of payment, i.e., monthly, quarterly or annual payments. Please make checks payable to Emmaus Campaign. You will be mailed payment reminders in accordance with the payment plan you choose. If you would like to have your pledge payments automatically billed to your credit or debit card, please go to www.cfocf.org/emmaus. Once completed, please return the gift agreement in the enclosed envelope or email to Madelyn Weed at mweed@cfocf.org.



Online Giving

To give online visit

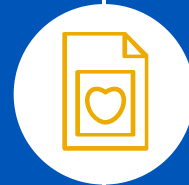
www.cfocf.org/emmaus



Gifts of Property, Life Insurance, Annuities, Wills or Bequests

There are different ways to support Emmaus both today and in the years to come via a blended gift of cash and a planned gift. Families or individuals can make gifts of real estate, personal property, life insurance, estate bequests, annuities or charitable remainder trusts. (For substantial gifts of property other than marketable securities, the IRS requires an appraisal.)

For assistance or information with gifts of property, life insurance, annuities, wills, bequests, or other planned gifts, please contact Madelyn Weed, CFRE, Vice President of Donor Services, at mweed@cfocf.org or 407-246-7188.



Gifts of Stock or Mutual Fund

Donors can use their own broker/agent to transfer stock. If the stock has been held long-term (over one year), the donor does not have to pay capital gains tax on the stock and is allowed a tax deduction for the full value of the stock. Donors may also choose to sell stock in order to claim a loss, which may be beneficial for tax circumstances. In either case, the stock must first be transferred to The Catholic Foundation before being liquidated. Please refer to your financial advisor for advice. For assistance with stock donations, contact Susan Hunt, CFO, at shunt@cfocf.org or 407-246-4803.



Donor Recognition

In recognition of those whose sacrificial donations provide for these residences for our retired priests, we will be listing all sponsors on a Dedication Monument within the Emmaus community. We pray that all who enter see the blessings made possible through the generosity of God's faithful. Those donors giving at the St. John Vianney Residence level will also be recognized with a plaque at the home.



Gifts from Retirement Accounts

There are many tax advantages to giving directly through your individual retirement account. If you would like more information on making a Qualified Charitable Distribution from your IRA, please contact Susan Hunt, CFO, at shunt@cfocf.org or 407-246-4803.



The Road to Emmaus

Bishop John Noonan

When contemplating the name for the residences for our retired priests, I thought about the journey of the priesthood, individually for the priest himself, and collectively, for the body of Christ, whom that individual, that priest so influences. I also thought about the idea of retirement and the transformation of the heart—the uncertainty all of us experience and the renewal of spirit through God, no matter the worry. Finally, I thought about our journey of faith; the Scriptures and the Eucharist are the indispensable elements for encountering the Lord.

Jesus walks with us along our way. The breaking of the bread was a moment of joy; an experience of the transcendence of Communion through, with and in Christ. No matter where we live, we are the object of God's love and we are called to share that love with each other.

The *Emmaus* story recounts the capitulation of the call to priesthood; Christ's priesthood which becomes our own. It is in this moment of conversion that we are able to truly acknowledge our membership into the body of Christ, what Jesus really means when He said, "This is my body."

Pope Emeritus Benedict XVI in a general audience, citing words of Saint Jerome, expresses my hope for *Emmaus*: "The privileged place for reading and listening to the Word of God is the liturgy, in which, celebrating the Word and making Christ's Body present in the Sacrament, we actualize the Word in our lives and make it present among us."



**The Catholic Foundation
of Central Florida**

Inspire Giving. Fund God's Work.

P.O. Box 4905, Orlando, Florida 32802

407.246.4889 | catholicfoundation@cfocf.org